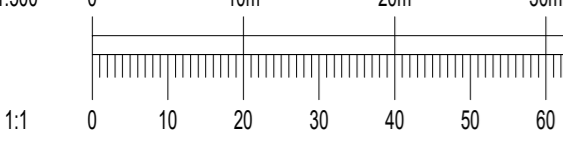
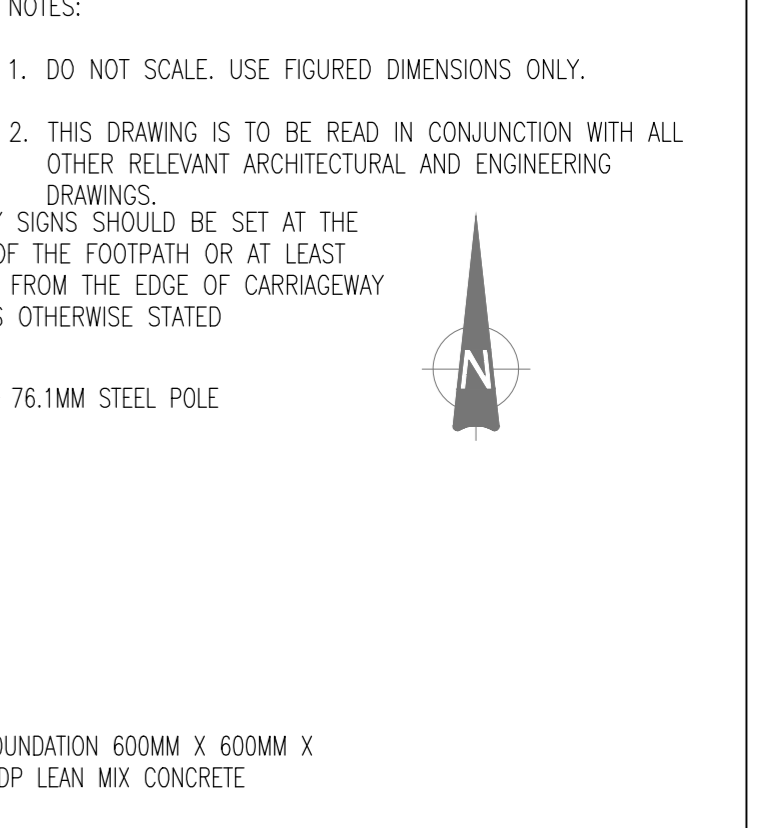


NOTE:
ROAD MARKINGS SHOWN IN RED FOR CLARITY PURPOSES ONLY

NOTE:
PLEASE NOTE THAT ALL ROAD MARKING AND SIGNAGE ARE IN ACCORDANCE WITH THE DEPARTMENT OF TRANSPORT "TRAFFIC SIGNS MANUAL" NOVEMBER 2010. TRAFFIC SIGNS AND ROADMARKINGS REFERENCES ARE SHOWN IN BRACKETS.

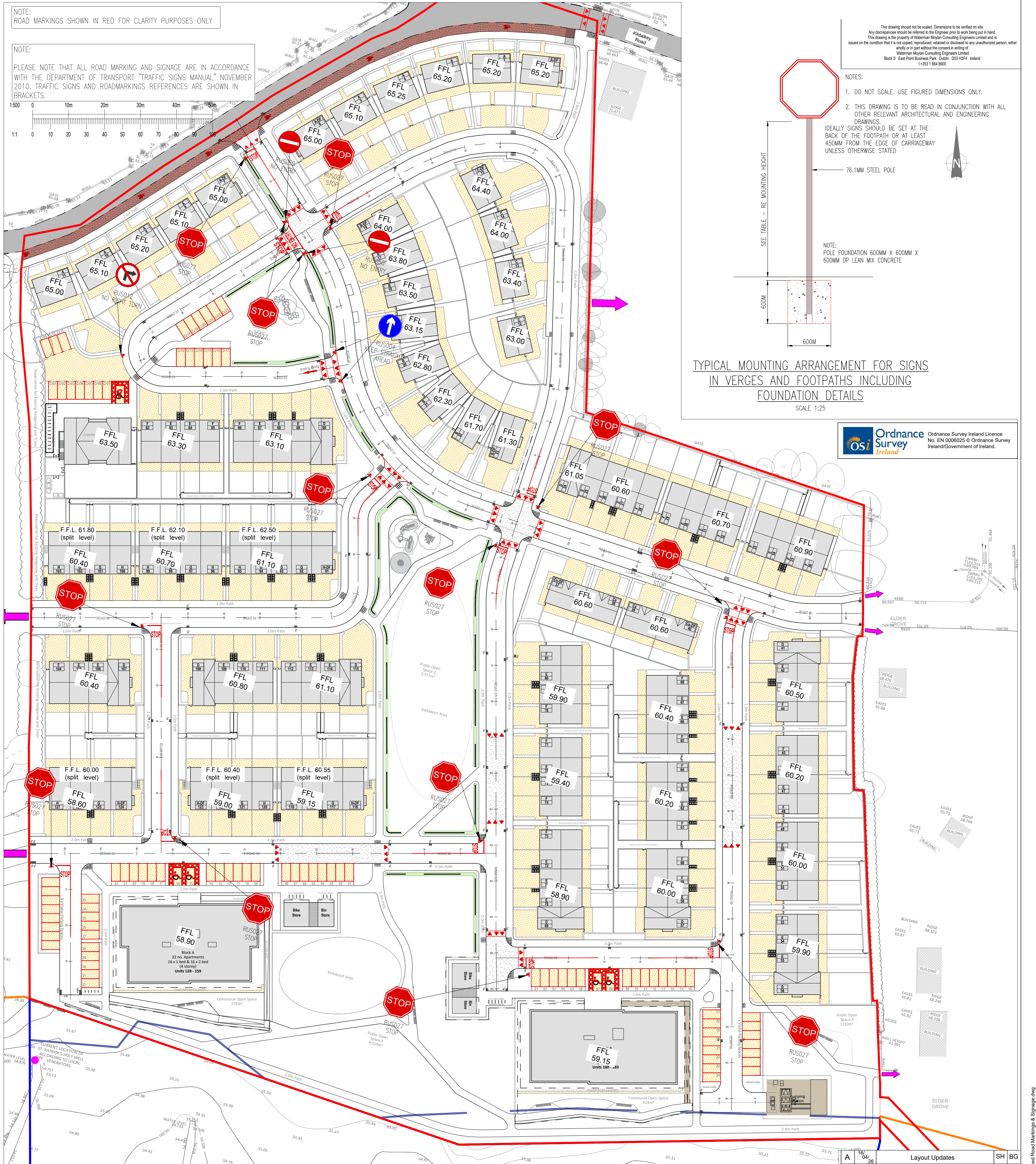


This drawing should not be scaled. Dimensions to be verified on site. Any discrepancies should be referred to the Engineer prior to work being put in hand. This drawing is the property of Waterman Moylan Consulting Engineers Limited and is issued on the condition that it is not copied, reproduced, retained or disclosed to any unauthorized person, either wholly or in part without the consent in writing of Waterman Moylan Consulting Engineers Limited. Block 5, East Point Business Park, Dublin, D03 H3F4, Ireland. 1-353 1 664 8900

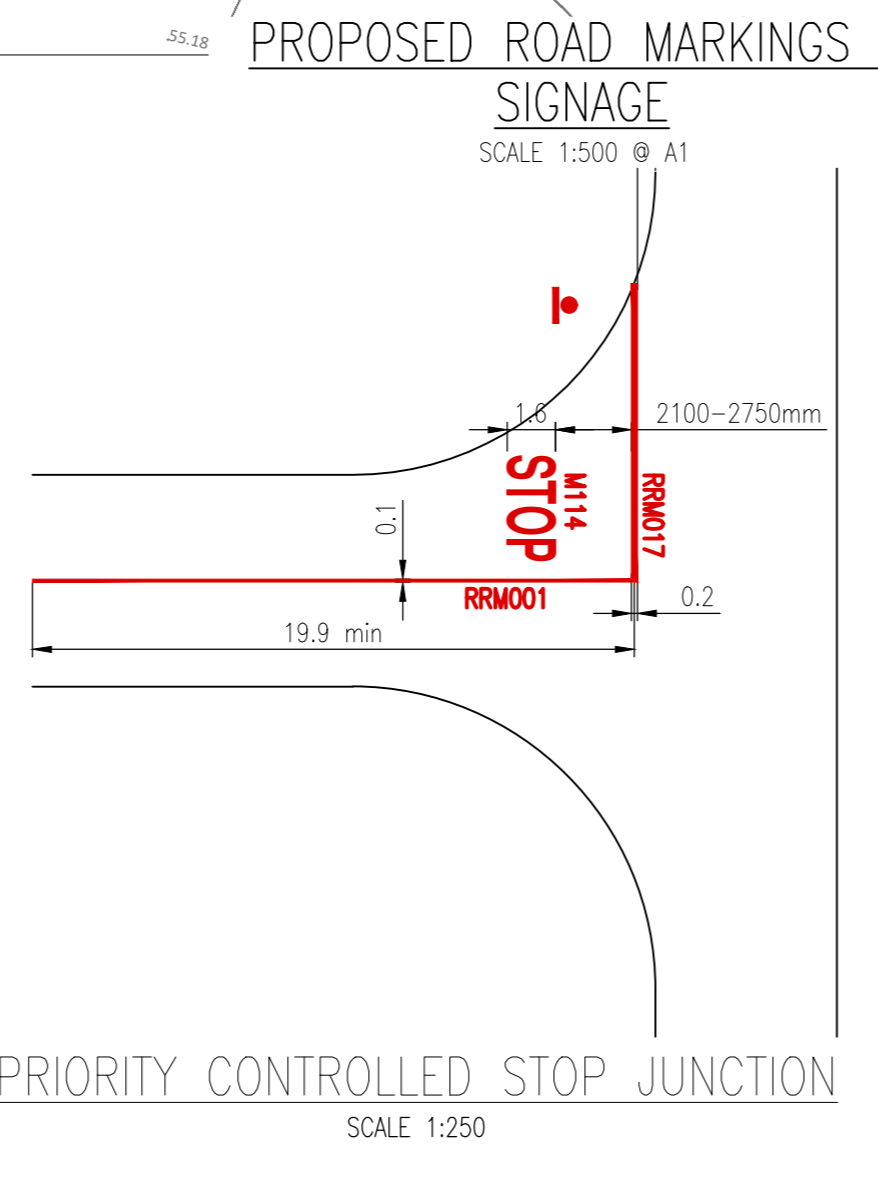
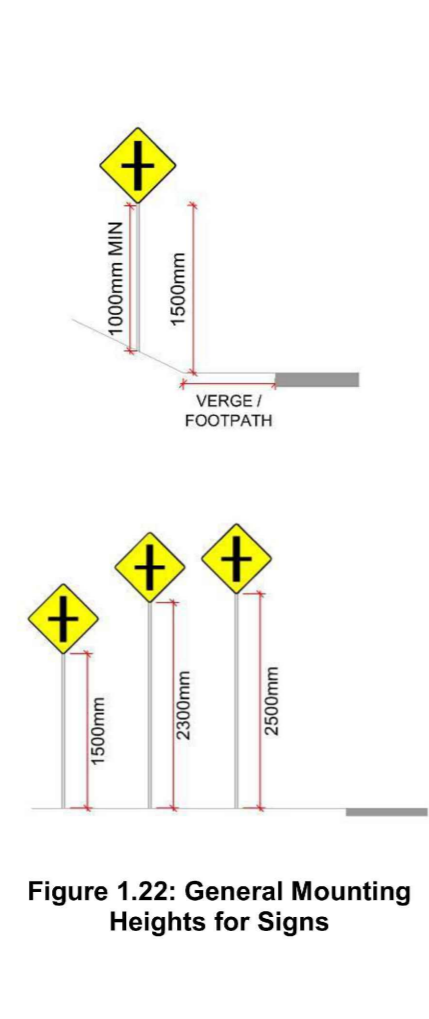


TYPICAL MOUNTING ARRANGEMENT FOR SIGNS IN VERGES AND FOOTPATHS INCLUDING FOUNDATION DETAILS
SCALE 1:25

Ordnance Survey Ireland Licence No. EN 0000225 © Ordnance Survey Ireland/Government of Ireland.



- MOUNTING HEIGHT**
- 1.3.21 Signs in rural areas should normally be erected with the lower edge of the sign or supplementary plate at the greater of 1500mm above the level of the adjacent paved surface and 1000mm above ground level below the sign. Signs should be mounted clear of any vegetation.
 - 1.3.22 In urban areas or locations where pedestrians are likely to walk under the sign, the desirable mounting height is 2300mm. Where cyclists are likely to pass under the sign, the desirable mounting height is 2500mm. See Figure 1.22.
 - 1.3.23 Low-level direction signs at roundabouts and junctions may be mounted at lower heights, but not less than 750mm above ground level. However, care must be taken to ensure that the signs do not obstruct sight lines.
 - 1.3.24 In city centres where congested conditions prevail, higher mounting heights may be required if standing vehicles consistently prevent signs from being seen. Alternatively cantilever signs or gantries may need to be considered.
 - 1.3.25 If signs are erected on structures, mounting heights less than 2300mm may be used, provided that the signs can still be seen, do not obstruct pedestrians and are out of the range of spray thrown up by passing vehicles.



| Rev | Date | Description | By | CHK |
|-----|----------|----------------|----|-----|
| A | 16/04/25 | Layout Updates | SH | BG |

Amendments

Project
KILDALKEY ROAD, TRIM, CO. MEATH

Title
PROPOSED ROAD MARKINGS & SIGNAGE

Client
LOUGHLINN DEVELOPMENTS LIMITED

waterman moylan

BLOCK 5, EASTPOINT BUSINESS PARK, ALFIE BYRNE ROAD, DUBLIN D03 H3F4 IRELAND. Tel: (01) 664 8900. Email: info@waterman-moylan.ie www.waterman-moylan.ie

Status
FOR PLANNING ONLY

Designed By: SK Approved: BG Waterman Ref: 23-041
Drawn By: SH Date: NOV. 2025 Scales @ A1: 1:500@A1

Project - Originator - Volume - Level - Type - Role - Number Revision

TRIM - WAT - ZZ - XX-DR - C - P110 **A**